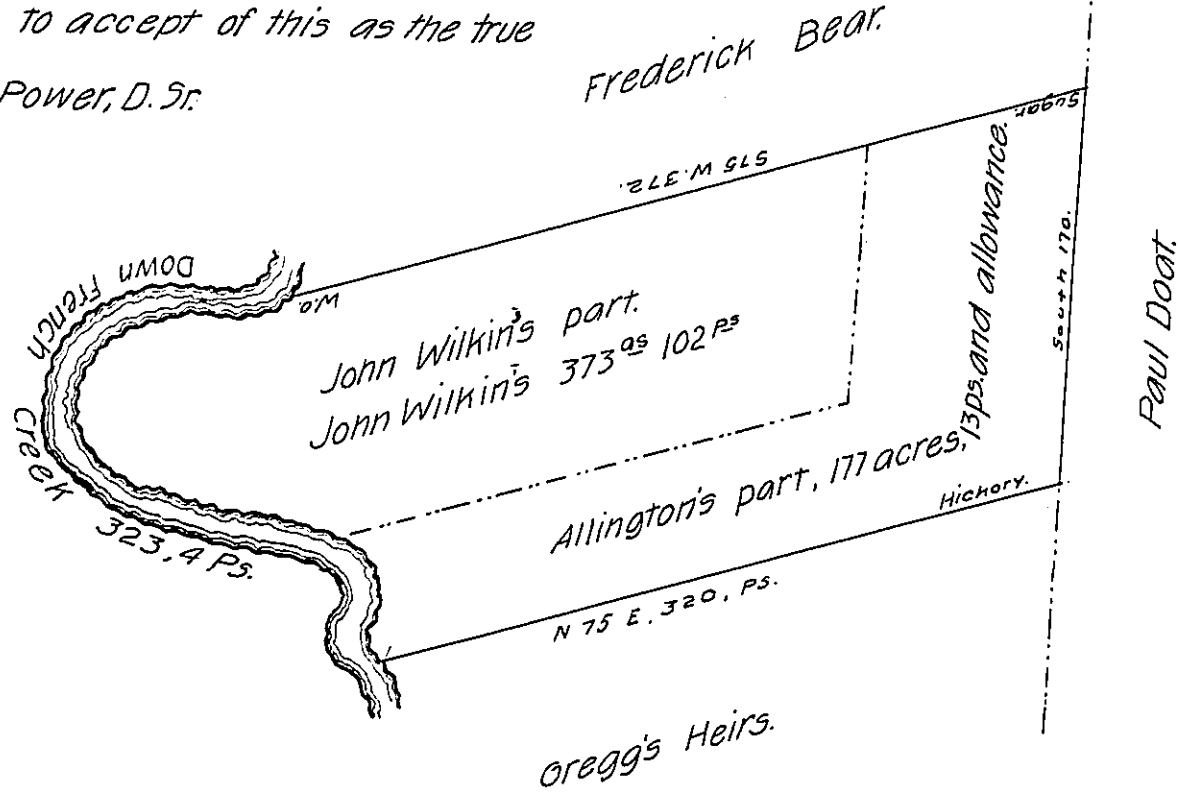


This survey has been returned to the Office by mistake, with an erroneous recital The Surveyor General will be pleased to accept of this as the true return.

John Power, D. Sr.



River Courses from W.O. Corner.

- S. 59 W. 11.
- S. 86 W. 20
- S. 83 W. 19.
- S. 67 W. 44. 5.
- S. 45 W. 17
- S. 85 E. 14
- S. 59 E. 18
- S. 44 E. 22
- S. 64 E. 20
- EAST 24. 9.
- S. 69 E. 20.
- S. 56 E. 25.
- S. 25 E. 49.
- S. 20 E. 19.

323 1/4 Ps

Situate on the East Side of French Creek in Allegheny County Containing 373 Acres 102 perches and allowance of Six per Cent for roads &c. Re, Surveyed the 20th day of September 1797 in pursuance of a warrant granted to John Wilkins dated the 18th day of March 1796 (it being the same tract of land that was surveyed the 27th day of May 1794 to John Wentworth in pursuance of his improvement bearing date the 3^d day of April 1792.

John Power,

To Daniel Brodhead, Esquire.

Surveyor General.

D. Sr.

IN TESTIMONY that the above is a copy of the original remaining on file in the Department of Internal Affairs of Pennsylvania, made conformably to an Act of Assembly approved the 16th day of February, 1833, I have hereunto set my Hand and caused the Seal of said Department to be affixed at Harrisburg, this twenty eighth day of September, 1906.

Secretary of Internal Affairs.